

Flansch-Kugelhahn, Stahl/ Flanged ball valve, steel PA-19D.245/445.P

Technische Daten

Bauform
 2-teilig
 Entlastungsbohrung
 Ausblasseichere Spindel
 ISO-Direktaufbauflansch

Specification

Design
 2-piece
 Release bore
 Blow-out proof stem
 ISO-Directmountingpad

Anschluss

Beidseitig Flansch
 DN 15 - DN 200
 Baulänge nach DIN 3202
 F4, ab DN 125 F5

Connection

Flanged Ends
 DN 15 - DN 200
 Face to face acc. to DIN 3202
 F4, from DN 125 F5

Betriebsdruck

PN 10 - PN 40

Pressure Range

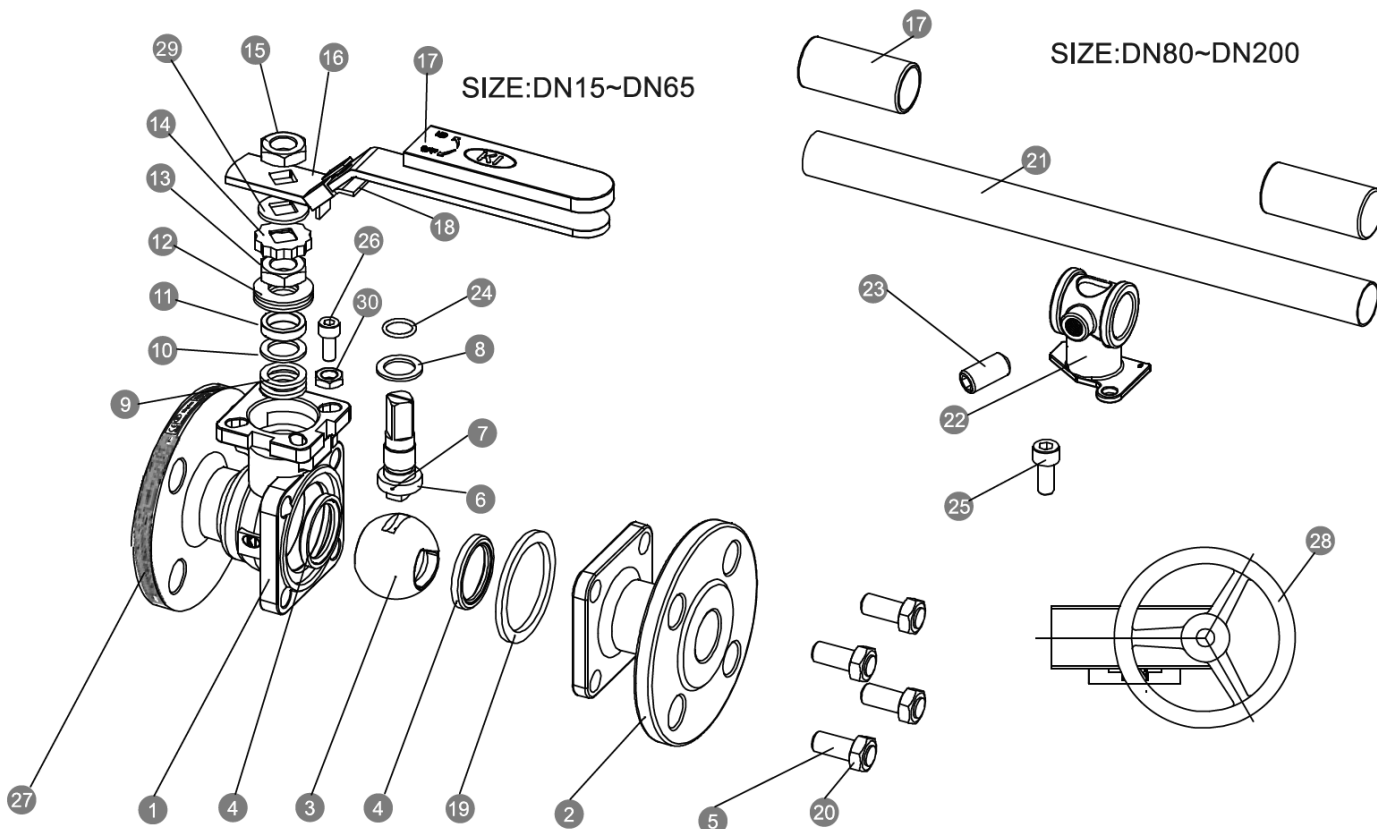
PN 10 - PN 40

Betriebstemperatur

max. 180°C

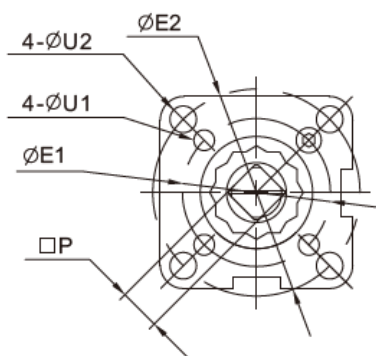
Temperature Range

max. 180°C



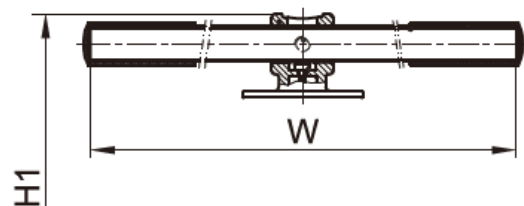
NO.	Part Name	Materials
1	Body	1.0619
2	Cap	1.0619
3	Ball	1.4308
4	Ball seat	TFM-1600
5	Bolt	8.8
6	Stem	304
7	Anti-Static	304
8	Thrust washer	PTFE
9	Stem packing	PTFE
10	Bushing	50%SS+50%PTFE / 304*
11	Gland	316
12	Belleville washer	301
13	Stem nut	A194-8
14	Stop-lock-cap	304
15	Handle nut (DN15 - DN65)	A194-8
16	Lever (DN15 - DN65)	304
17	Handle sleeve	304
18	Lock device (DN15 - DN65)	304
19	Body gasket	PTFE
20	Bolt nut	A2-70
21	Pipe handle (DN80 - DN200)	A53+Plated Zn
22	Handle Adapter (DN80 - DN200)	A351-CF8
23	Set screwed (DN80 - DN200)	A2-70
24	O-Ring	FKM (VITON)
25	Bolting (DN80 - DN200)	A2-70
26	Stop Bolt	A2-70
27	Nameplate	304
28	Worm gear (optional)	Package
29	Support washer	304
30	Stop nut	A2-70

Direct Mount Pad (ISO 5211)



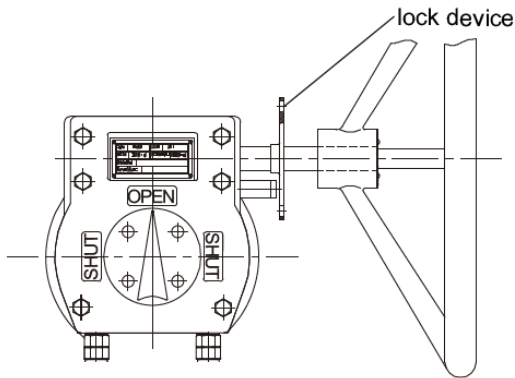
Pipe Handle Operation

SIZE : DN80 ~ DN200



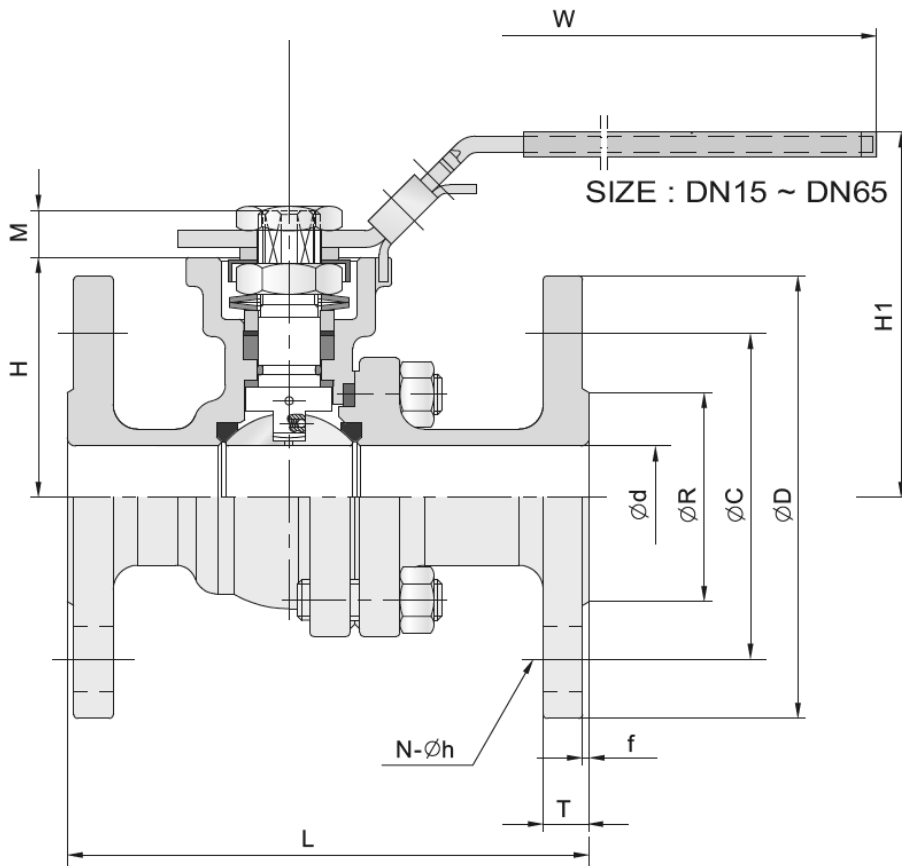
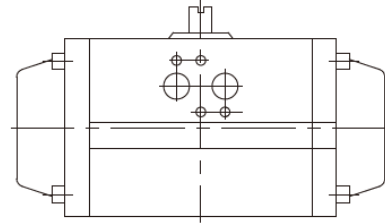
Gear Operation (Optional)

SIZE : DN65 ~ DN200



Automation (Optional)

SIZE : DN15 ~ DN200



EN PN10/16/25/40 (F1 / F7, F4 / F5)

Unit : mm

DN	PN	d	L	*L	R	D	C	f	T	N	h	H	H1	W	M	P	U1	U2	E1	E2	ISO 5211
15	10	15.0	115	130	45	95	65	2	16	4	14	48	78	147	9	9	6	6	36	42	F03-F04
20		20.0	120	150	58	105	75	2	18	4	14	53	84	147	9	9	6	6	36	42	F03-F04
25	16	25.0	125	160	68	115	85	2	18	4	14	59	90	177	11	11	6	7	42	50	F04-F05
32	25	32.0	130	180	78	140	100	2	18	4	18	71	102	177	11	11	6	7	42	50	F04-F05
40	40	38.0	140	200	88	150	110	3	18	4	18	76	110	197	14	14	7	9	50	70	F05-F07
50		50.0	150	230	102	165	125	3	20	4	18	85	118	197	14	14	7	9	50	70	F05-F07
65	10/16	63.5	—	290	122	185	145	3	18	4	18	102	150	267	17	17	9	11	70	102	F07-F10
									22	8		107	155								
	25/40	170	290	107	155																
80	10/16	76.0	180	310	138	200	160	3	20	8	18	112	176	300	17	17	9	11	70	102	F07-F10
	24								117			181									
100	10/16	100.0	190	350	158	220	180	3	20	8	18	140	210	400	22	22	—	11	—	102	F10
	162				235	190	24		22												
125	10/16	125.0	325	400	188	250	210	3	22	8	18	183	263	600	27	27	14	—	125	—	F12
	270				220	26	26														
150	10/16	150.0	350	450	212	285	240	3	22	8	22	204	284	800	27	27	14	—	125	—	F12
	218				300	250	28		26												
200	10	200.0	400	550	268	340	295	3	24	8	22	253	334	800	27	27	14	18 ^(a)	125	140 ^(a)	F12orF14 ^(a)
	16				30	12	26														
	25				30	12	26														
	40				34	30	30														

(a):Optional

L for Series F4 / F5
 *L for Series F1 / F7